

# Yesterday

Lennon/McCartney

Arranjo para  
Quarteto de Flautas Doce  
S S C T:  
Edu Bocchese - 2005

# Yesterday

Lennon / McCartney

♩ = 72

Soprano 1

Soprano 2

Alto

Tenor

This block contains the vocal score for the first system of the piece. It features four staves: Soprano 1, Soprano 2, Alto, and Tenor. The music is in 4/4 time with a key signature of one flat (Bb). The tempo is marked as quarter note = 72. The vocal lines are written in treble clef. The Soprano 1 part has a melodic line with a fermata on the second measure. The Soprano 2 part has a similar melodic line but includes a rhythmic accompaniment of eighth notes starting in the third measure. The Alto and Tenor parts have a more rhythmic accompaniment of eighth notes, with the Tenor part having a melodic line that mirrors the Soprano 1 part.

S1

S2

A

T

This block contains the instrumental score for the second system of the piece. It features four staves: S1, S2, A, and T. The music is in 4/4 time with a key signature of one flat (Bb). The tempo is marked as quarter note = 72. The instrumental parts are written in treble clef. The S1 part has a melodic line with a fermata on the second measure. The S2 part has a rhythmic accompaniment of eighth notes. The A part has a rhythmic accompaniment of eighth notes with a melodic line that mirrors the S2 part. The T part has a rhythmic accompaniment of eighth notes with a melodic line that mirrors the S1 part.

10

S1

S2

A

T

Detailed description: This system of musical notation covers measures 10 through 15. It features four staves for voices: Soprano 1 (S1), Soprano 2 (S2), Alto (A), and Tenor (T). The music is in a key with one flat (B-flat major or D minor) and a 4/4 time signature. Measure 10 begins with a treble clef and a key signature of one flat. A double bar line with repeat dots appears at the start of measure 11. The vocal lines consist of various rhythmic patterns, including eighth and sixteenth notes, and rests.

16

S1

S2

A

T

Detailed description: This system of musical notation covers measures 16 through 21. It features the same four vocal staves (S1, S2, A, T) as the previous system. The key signature remains one flat. Measure 16 starts with a treble clef. A double bar line with repeat dots is present at the beginning of measure 17. The vocal parts continue with rhythmic patterns, including some sixteenth-note runs and rests.

22

S1  
S2  
A  
T

Detailed description: This system contains measures 22, 23, and 24. The Soprano 1 (S1) part begins with a half note G4, followed by quarter notes A4, B4, and C5. The Soprano 2 (S2) part has a rhythmic accompaniment of eighth notes: G4, A4, B4, C5, G4, A4, B4, C5. The Alto (A) part has a rhythmic accompaniment of eighth notes: G4, A4, B4, C5, G4, A4, B4, C5. The Tenor (T) part has a rhythmic accompaniment of quarter notes: G3, F3, E3, D3.

25

S1  
S2  
A  
T

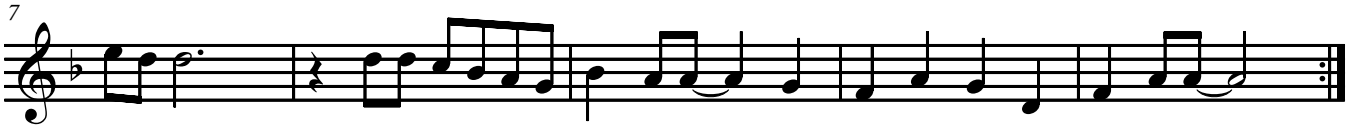
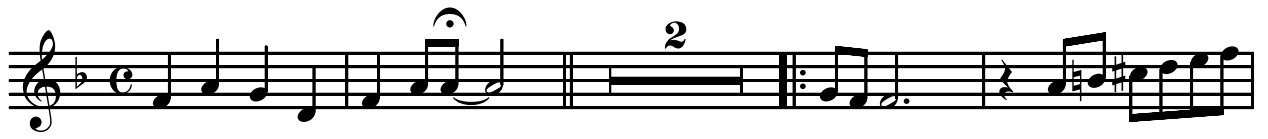
Detailed description: This system contains measures 25, 26, 27, and 28. The Soprano 1 (S1) part has a melodic line: G4, A4, B4, C5, G4, A4, B4, C5. The Soprano 2 (S2) part has a rhythmic accompaniment of eighth notes: G4, A4, B4, C5, G4, A4, B4, C5. The Alto (A) part has a rhythmic accompaniment of eighth notes: G4, A4, B4, C5, G4, A4, B4, C5. The Tenor (T) part has a rhythmic accompaniment of quarter notes: G3, F3, E3, D3. A double bar line with repeat dots appears after measure 26.

# Soprano 1

# Yesterday

Lennon / McCartney

♩ = 72

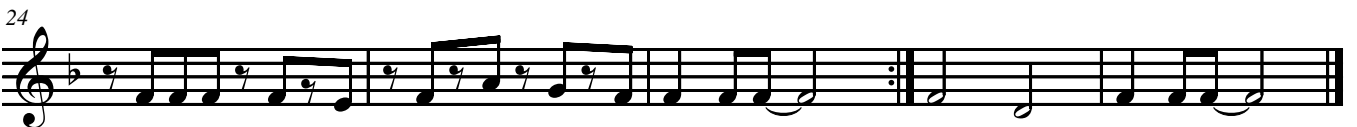
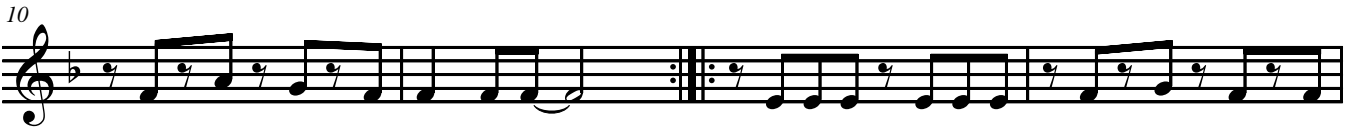
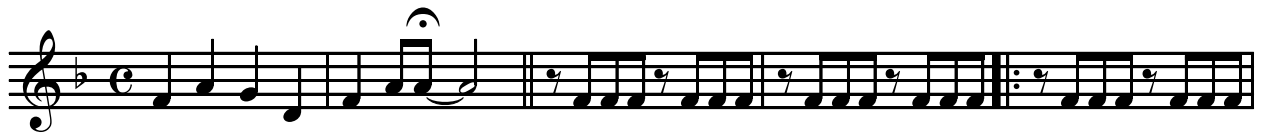


# Soprano 2

# Yesterday

Lennon / McCartney

♩ = 72





Tenor

# Yesterday

Lennon / McCartney

♩ = 72

